



17758 Hornbean Dr.
Chesterfield, MO 63005

phone: (636) 537-1001
fax: (636) 537-1009

COMMERCIAL REAL ESTATE SERVICES:

Landlord & Tenant
Representation

Acquisitions & Sales

Land Development

Consulting



VISIT OUR WEBSITE:
www.scottjenkinscompany.com

Individual Member



Certified Commercial
Investment Member

*For Lease Information,
Please Contact:*

SCOTT C. JENKINS, CCIM
scottj@scottjenkinscompany.com

OFFICE SPACE FOR LEASE

707 Spirit 40 Park Dr.
Suites 100 & 115
Chesterfield, MO 63005



707 Spirit 40 Park Drive

- Located in Booming Chesterfield Valley
- Part of Three-Building Office Campus
- Adjacent to New Development with I-64 Access
- Premium Interior Finishes Available
- Office Size Available:
 - Suite 100: 3,186 rsf
 - Suite 115: 1,784 rsf
- Lease Rate: \$18.50 psf
Full Service (except janitorial)



*The information contained in this publication has been provided by sources deemed reliable but has not been verified. Broker makes no express or implied warranties or representations regarding its accuracy and submits such information subject to change without notice.

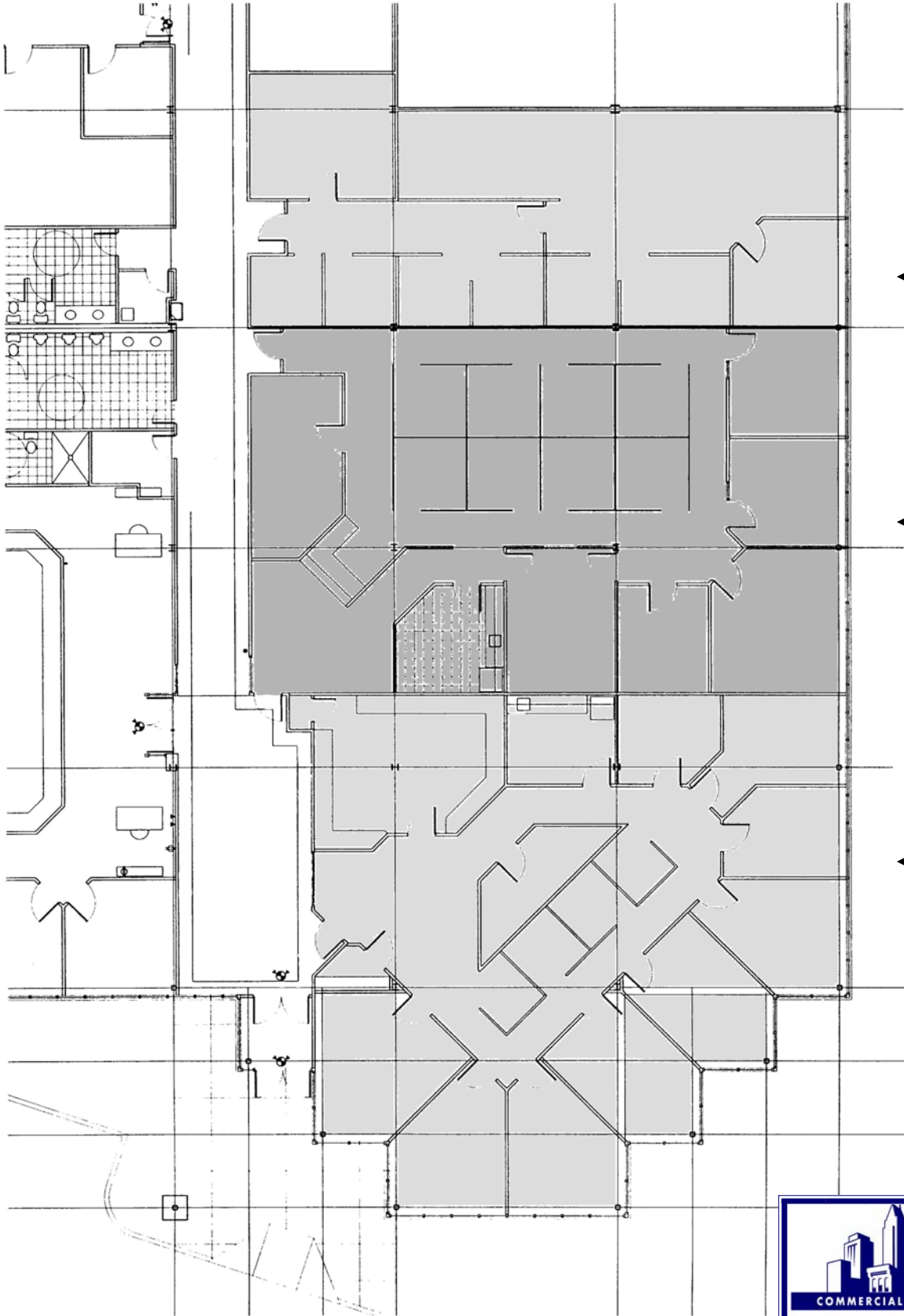
707 Spirit 40 Park Drive



707 Spirit 40 Park Dr.



**707 Spirit 40 Park Dr.
Suites 100 & 115**



**Suite 115
1,784 rsf**



**~~Suite 110~~
LEASED**



**Suite 100
3,186 rsf**

