



17758 Hornbean Dr.
Chesterfield, MO 63005

phone: (636) 537-1001
fax: (636) 537-1009

COMMERCIAL REAL ESTATE SERVICES:

Landlord & Tenant Representation

Acquisitions & Sales

Land Development

Consulting

••••

VISIT OUR WEBSITE:

www.scottjenkinscompany.com

Individual Member



Certified Commercial
Investment Member

*For Lease Information,
Please Contact:*

SCOTT C. JENKINS, CCIM

scottj@scottjenkinscompany.com

OFFICE BUILDING FOR LEASE

18250 Edison Ave.
Chesterfield, MO 63005

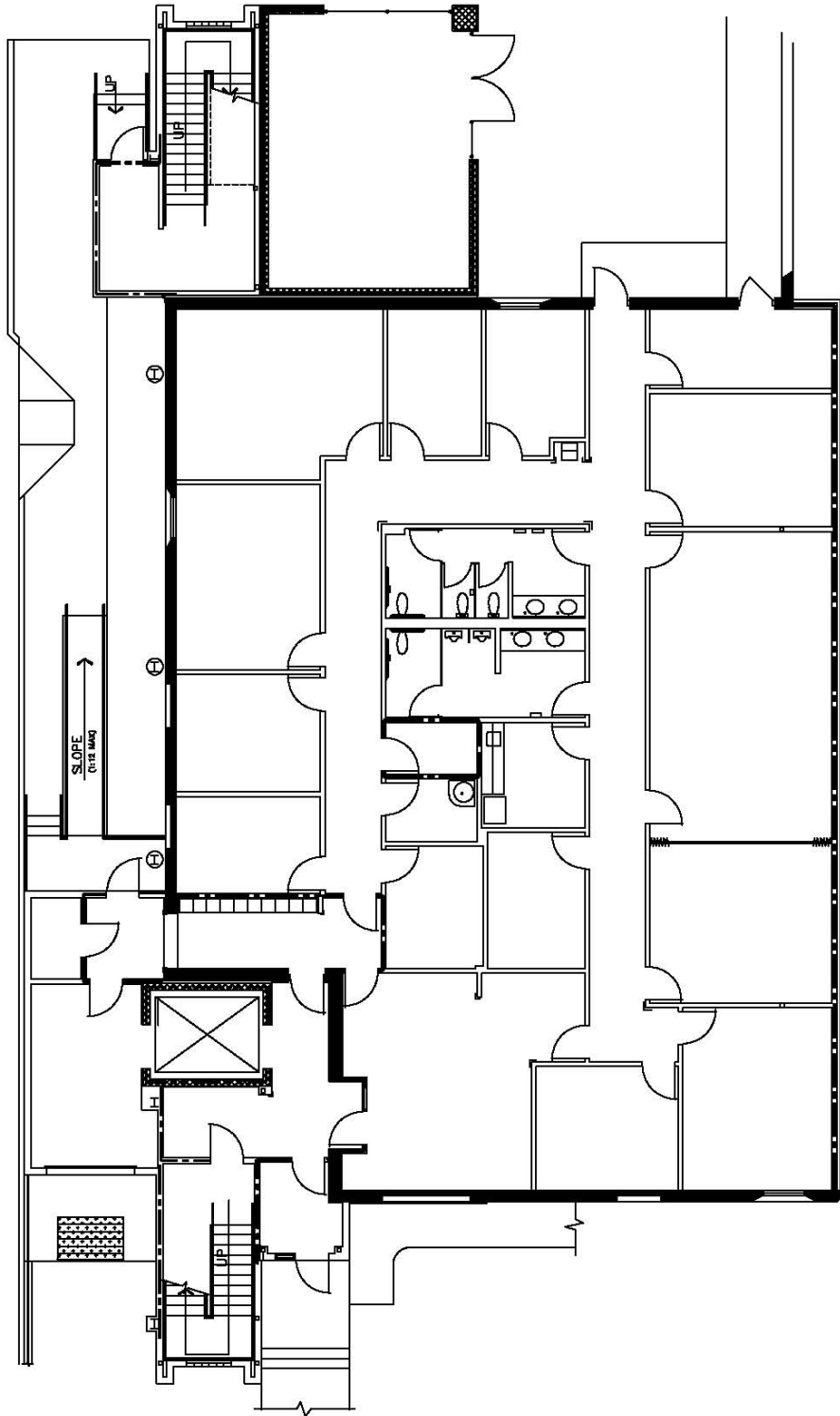


Property Highlights

- **Former FAA Flight Safety Service Bldg**
- **14,222 rsf 2-story building**
- **Can subdivide: 4,507 rsf and 9,715 rsf**
- **Secured, gated, and covered parking**
- **Located at Spirit of St. Louis Airport**
- **Local backup power generators**
- **Fully sprinklered**
- **Excellent call center site**
- **Please see attached floor plans**
- **LEASE RATE: \$14.00 psf Full Service (except janitorial)**

**The information contained in this publication has been provided by sources deemed reliable but has not been verified. Broker makes no express or implied warranties or representations regarding its accuracy and submits such information subject to change without notice.*

18250 Edison Ave.



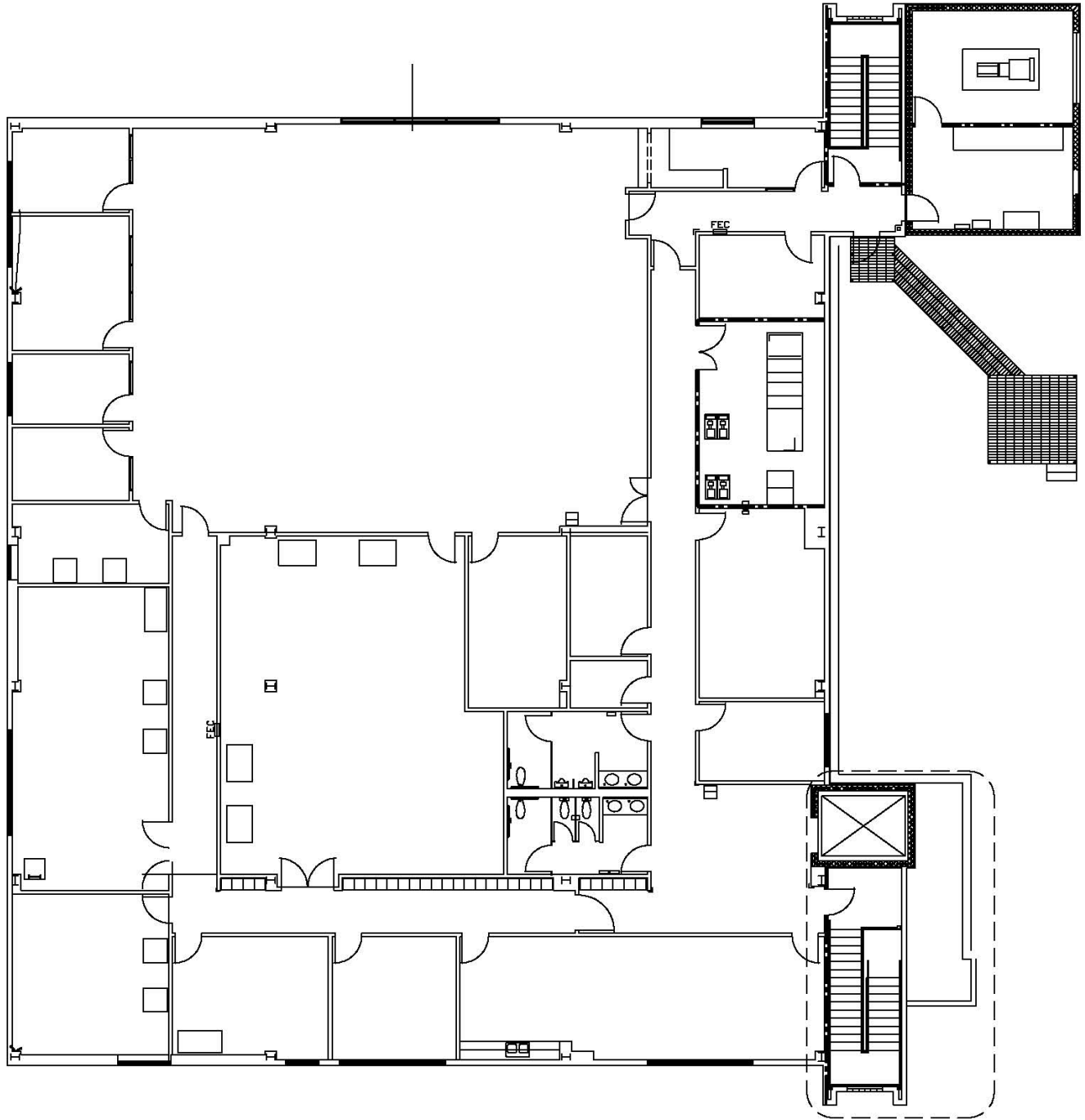
NORTH

MAIN FLOOR PLAN

SCALE: 1/8" = 1'-0"



18250 Edison Ave.



SECOND FLOOR PLAN

SCALE: 1/8" = 1'-0"

NORTH

